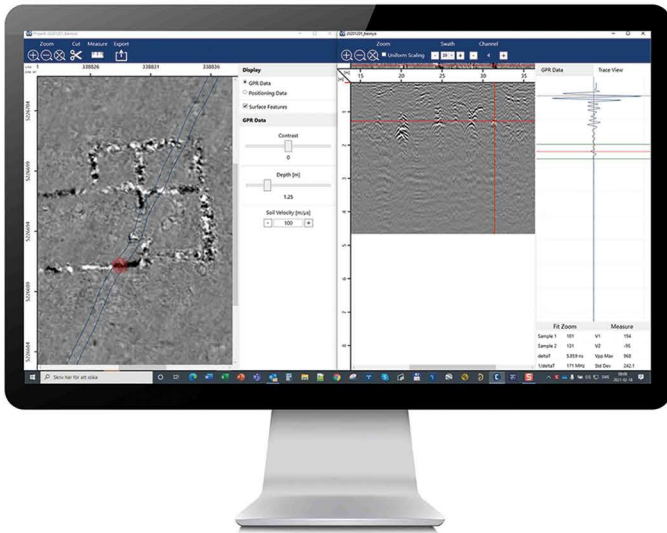


Rapid Data Verification  
and Positioning QA/QC

ViewR is a new Windows-based software utility that lets users quickly and easily open and view Raptor data files in an interpolated top-view format without importing them into Condor.

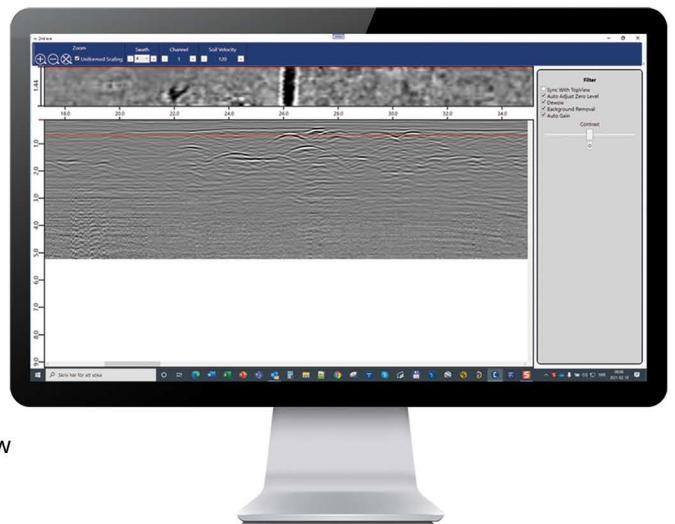
The ability to review a Raptor project in this way allows you to check the quality and integrity of your project data while still on-site. This approach will enable you to identify potential issues with the quality of critical positioning data before leaving the project site, possibly saving costly return visits or reruns.



- 🎯 **Excellent tool for managing large Raptor projects**
- 🎯 **Zoom into specific areas of a project, cut the desired section, recombine the associated swaths and save it as a sub-project.**

This simple and intuitive software tool provides the following functionality

- Open and view Raptor projects
- Open and view individual Raptor swaths
- View and QC GPR and positioning data
- Select/deselect surface features
- Filter GPS quality
- Adjust and set interpolation parameters
- Fix GPS/TS offsets
- Scroll time-sliced top view (un-migrated)
- Data Cut Function
- Recombine swaths
- Swath selection with the B-scan view and tomographic top-view



## System requirements

Operating System	Windows™ 10 (64-bit)
Processor (CPU)	Intel® Core™ i7 Processor or equivalent
Memory	≥ 16 GB RAM
Storage	≥ 500 GB internal storage – SSD preferred

As with all ImpulseRadar systems, we look forward to your valuable feedback on the use and functionality of ViewR to feed our customer-driven development process.

*ImpulseRadar products are under continuous development and we reserve the right to change specifications at any time and without prior notice. You may verify product specifications at any time by contacting our headquarters via our website.*



[www.impulseradargpr.com](http://www.impulseradargpr.com)



ImpulseRadar AB  
Skolgatan 22  
SE-939 31, Malå, Sweden