

CrossOver Series

Series of Ground Penetrating Radar systems

User Manual



Document information
Manual version: 2026-01

© Copyright 2025, ImpulseRadar Sweden AB
Skolgatan 22, Malå, 93931
Sweden
www.impulseradargpr.com

All rights reserved

Table of Contents

1	Hardware Overview	4
1.1.	GPR Unit.....	5
1.2.	Connector panel	5
1.3.	Battery.....	6
1.4.	Pushcart.....	7
1.5.	GPR unit fitting/removal procedure	8
1.6.	Odometer (wheel encoder)	9
1.7.	GPS mounts	10
1.8.	Pulling kit	11
2	Appendix A – Specifications.....	12
3	Appendix B – Care and Maintenance	17
4	Appendix C - External GPS.....	19
5	Appendix D – Regulatory Notices	20
6	Appendix E – Warranty Statement	23

About This Manual

The ImpulseRadar CrossOver is a state-of-the-art, self-contained Ultra-Wide Band (UWB) Ground Penetrating Radar (GPR) system. The dual frequencies and mechanical design combined with the various accessories like the GPS mounting kit make the system suitable for different kind of locating and mapping applications.

This manual is structured as follows:

Section 1	Hardware systems and accessories
Section 2	Appendices additional, notes and technical information

For information on other applications and/ or configurations, please contact your local ImpulseRadar representative, or contact our sales team at sales@impulseradar.se

We welcome your feedback concerning this manual and its content. Please send your comments or suggestions to us at support@impulseradar.se. Also, for further information on the use of this software, please contact your local ImpulseRadar representative or contact our support team.

1 Hardware Overview

ImpulseRadar CrossOver systems are self-contained Ultra-Wide Band (UWB) Ground Penetrating Radar (GPR) systems. The electronic design is based on a modern real-time sampling (RTS) technology platform, offering state-of-the-art data acquisition capabilities. Each CrossOver GPR unit incorporates two separate GPR-channels, operating at high speed as well as an in-built differential GPS. The following GPR units are available at the time of writing:

GPR UNIT	Abbreviation	Centre Frequency
CrossOver730	CO730	70 MHz and 300 MHz
CrossOver1760	CO1760	170 MHz and 600 MHz
CrossOver4080	CO4080	400 MHz and 800 MHz

The CrossOver is supported with a range of accessories that includes pushcarts (CO4080 and CO1760 only), pulling kits and external GPS mounts, as shown in Figure 1 below.



Figure 1 System Overview

Data collection is managed over an Ethernet Wi-Fi link and a suitable Android device running the ImpulseRadar ViewPoint App (ViewPoint). With ViewPoint, the operator may collect single line data, albeit with two frequencies, or a few different types of multi-line projects. Whether a single line of project-based data has been collected, datasets may be directly imported into the ImpulseRadar CrossPoint software (CrossPoint) for processing and evaluation in a Windows environment.

1.1. GPR Unit

The CrossOver unit has a field-rugged design equipped with both a low and high-frequency channel, making it possible to detect shallow and deep targets. Power supply via a removable and rechargeable li-ion battery easy to exchange on the top of the antenna.

Apart from physical size, the CrossOver GPR units share a similar mechanical design and the same arrangement for the battery, connector panel, and measuring wheel mount. A CrossOver 4080 GPR unit is used to highlight these features, as shown below in Figure 2.




Regardless of the model, each Crossover GPR unit includes and a high-quality differential GPS receiver (Ublox/Tallysman). There is no external connection to these components, although markings on the housing showing their approximate internal location.





Figure 2 CrossOver 4080 GPR unit with a battery attached.

1.2. Connector panel

Refer to the arrangement shown in Figure 2.

- Yellow – Kill switch . In certain countries, a GPR device used on walls should have a kill-switch. If required, this connector allows the connection of an external kill switch.
- Silver – ON/OFF button . Press and hold the button for approximately two seconds to switch on the unit. Once on, the button glows blue. A subsequent press will switch off the GPR unit.
- Blue – External GPS . It allows the connection of an external GPS to provide higher precision positioning. Communication is via a serial RS232 link using the NMEA 0183, V2 protocol, and GGA data string.

- Red – Power, and Ethernet . A battery is the preferred way of powering the GPR unit; however, an optionable power cable is available upon request. This connector is also used for testing and factory upgrades via Ethernet.
- Black – Measuring Wheel . It allows the connection of the odometer cable (wheel encoder) from the pushcart. Note, this connector is placed further back on the lower frequencies (CO1760 and CO730).

All cable connectors are of high-quality from Yamaichi. To insert or remove a cable connector, hold the connector sleeve then gently push or pull the connector straight without turning. Each connector has a key slot to prevent damage if incorrectly connected into the wrong socket.

1.3. Battery

The CrossOver is powered via a removable and rechargeable Li-ion battery, which is a nominal 8.7 Ah/ 96.57 Wh, providing approximately 7-hours of continuous operation.

The battery fits securely to the top of the GPR unit. To insert, position it on the mounting plate and slide it gently into place until you hear the locking pin engage (click). To remove, pull the locking pin out, then gently slide the battery out and off from the mounting plate, as shown in Figure 3 below.

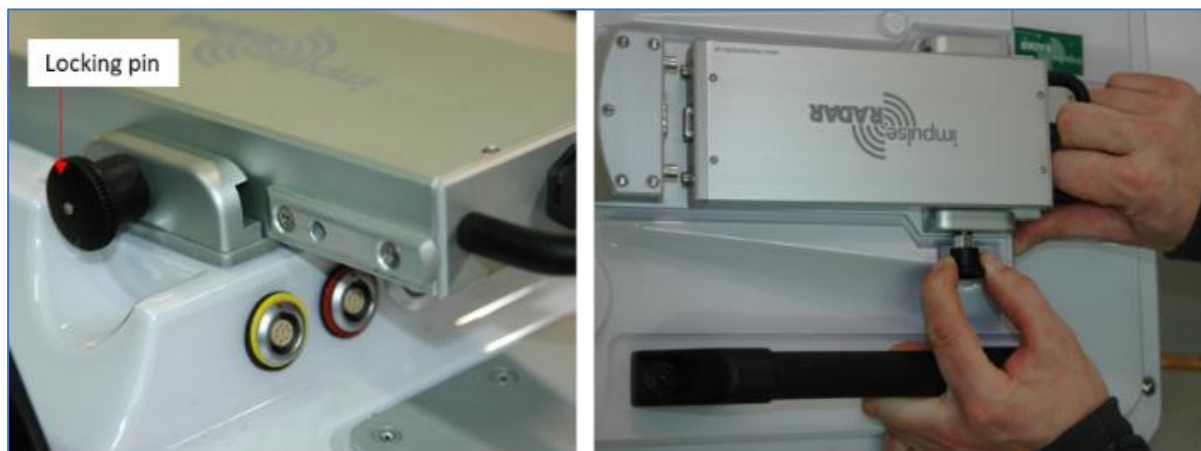


Figure 3 Mounting the battery

Note: ImpulseRadar Li-ion batteries are approved according to the UN38.3 standard and can, therefore, be safely hand-carried on passenger aircraft or shipped by air cargo. However, air industry regulations can change at any time or for specific airline operators. Conduct your own research into this before traveling or shipping.

WARNING: USE ONLY FACTORY-SUPPLIED BATTERY CHARGER

To avoid the risk of fire, explosion, personal injury, or damage to the battery:

- Charge the PinPointR/CrossOver battery only with the factory-supplied charger. It is specifically designed and calibrated for this battery’s voltage, chemistry, and capacity.
- DO NOT use third-party, modified, or non-approved chargers. Incompatible charging devices may result in unsafe operating conditions and permanent battery damage.
- DO NOT attempt to charge the battery if it is damaged, swollen, or leaking. Contact a qualified technician or the manufacturer for assistance.
- Keep the charger and battery away from water, heat sources, flammable materials, and unsupervised areas during charging.

Failure to follow these instructions may void the warranty and cause serious safety hazards

1.4. Pushcart

The C04080 and C01760 GPR units can be used with optional Carts (foldable), as shown below in Figure 4. The pushcarts allow the GPR unit to be manoeuvred easily over a range of surfaces. The Cart incorporates a brake on the rear-right wheel, easily engaged by your foot.

When not in use, the handle mechanism can be folded by removing the M6 retaining screw, as shown in Figure 5 below. This reduces the overall physical size to facilitate transportation and/or storage.



Figure 4 CrossOver 4080 foldable cart

The GPR unit is mounted into a tray that is connected to the cart-hood by adjustable support straps. This arrangement allows the GPR unit to be positioned on or very close to the ground

surface. This arrangement, as shown in Figure 5 below, allows the GPR unit to ‘float’ freely vertically and follow the contour of the ground, or move over bumps and other small obstacles.

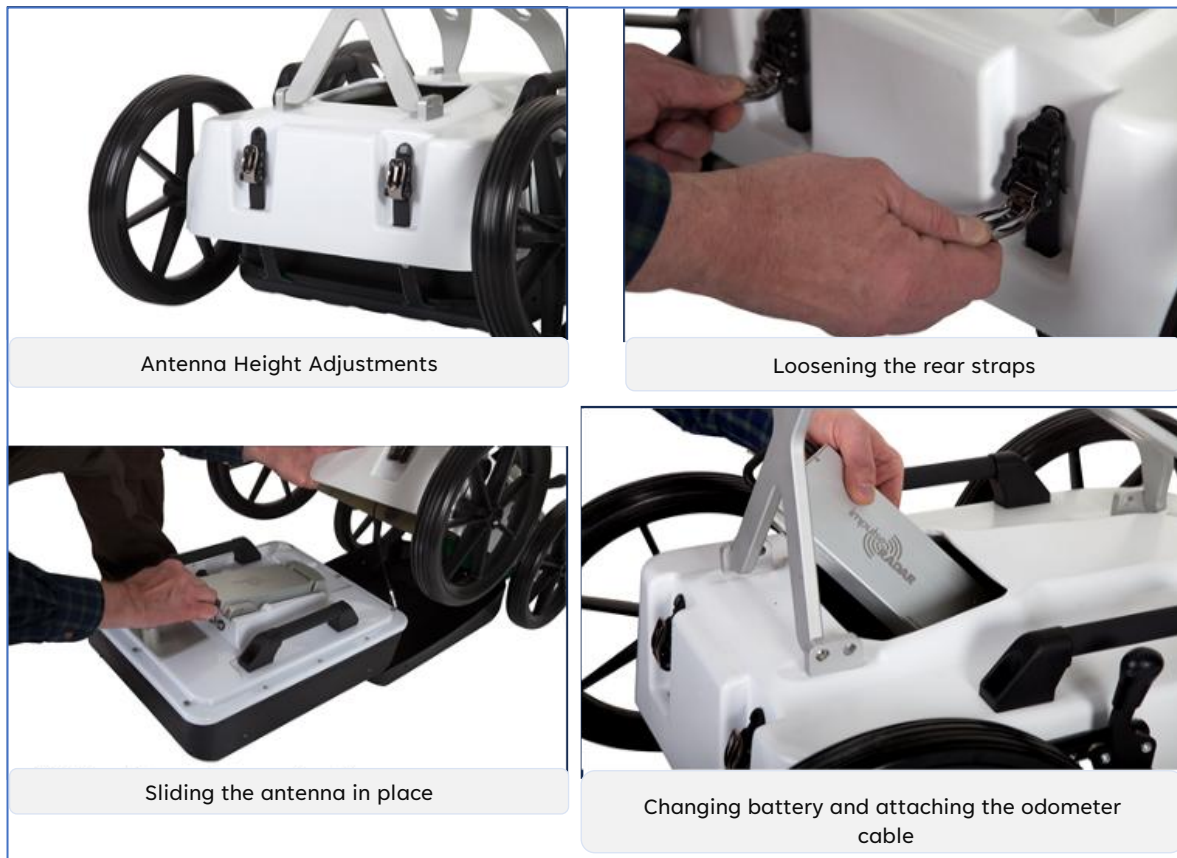


Figure 5 GPR unit fitting and height adjustments

Note: To ensure the proper operation of the spring-loaded retaining screw; you are advised to periodically lubricate the retaining screw and the threaded insert into which in screws. How often will depend on environmental factors but should form part of general preventative maintenance for all mechanical parts of the pushcart.

Note: for safety, you are advised to engage the wheel brake any time the system is not under your direct control, especially when working on a gradient.

1.5. GPR unit fitting/removal procedure

GPR unit fitting procedure, as referenced in Figure 5 above.

1. Disconnect the wheel encoder connector attached to the GPR unit.
2. Remove the two rear and the front straps from the snap connectors.
3. Lift the cart-hood and slide the GPR unit into the skid tray.
4. Connect the GPR unit to the tray with M5 Screws on both sides.

5. Close the cart-hood and refit the rear and front straps into the snap connectors.
6. Adjust the front and back straps to obtain the desired height.
7. Connect the odometer cable (black connector)

Note: When removing the GPR unit, remember to disconnect the odometer cable before lifting the cart-hood. It's essential to make sure to remove the front strap to avoid tension on the strap connection point at the front of the skid tray.

1.6. Odometer (wheel encoder)

When the pushcart is moved over the survey area, the distance travelled is measured using an odometer (wheel encoder), via a connection to the rear-right wheel. This odometer is also used to trigger the GPR measurement process. Depending on the model you have, the odometer mechanism may be via a belt drive (O-ring) or direct drive. Older models use the belt-drive, where the odometer is located above the centre of the wheel shaft and connected to it via a rubber O-ring. For newer models using the direct drive, the odometer is mounted centrally and directly to the wheel axel, so no O-ring is necessary.

If necessary, the O-ring can be replaced for belt-driven models by removing the wheel, as shown in Figure 6. For this purpose, a spare O-ring is cable-tied to the encoder cable under the pushcart hood.

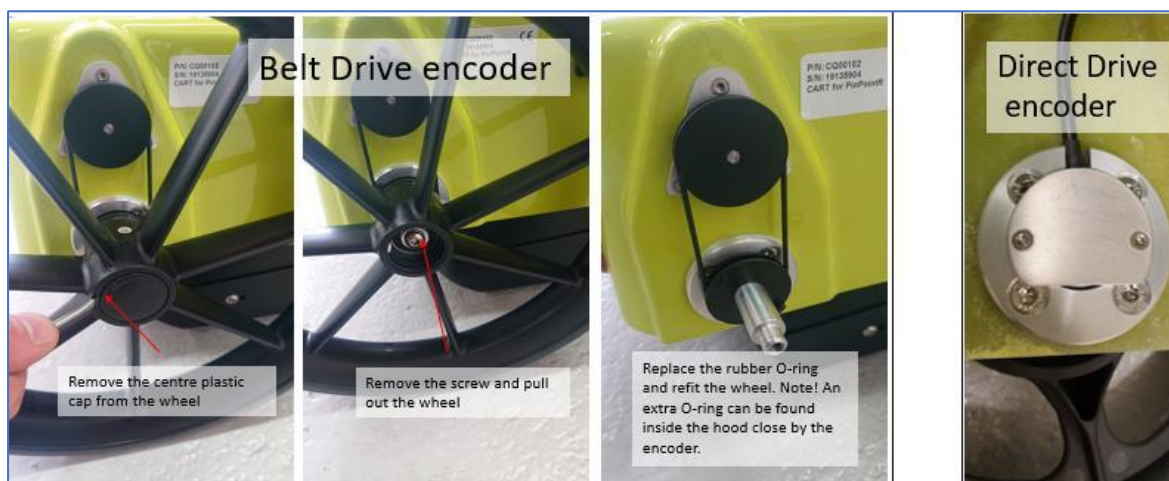


Figure 6 Belt vs. direct drive wheel encoder. Procedure for replacement of O-ring

Note: When refitting the wheel, use blue Loctite or equivalent to help secure the M6 retaining screw

1.7. GPS mounts

An optional GPS mounting kit is available for the pushcart to support the connection of external GPS receivers, as shown in Figure 7 (GPS receiver not included). This kit contains extension poles, support arms, and an RS232 serial cable to facilitate the connection between the GPR unit and an external GPS receiver.

The GPS cable plugs into the GPR unit via the external GPS socket (blue bezel), while the other end is terminated with a standard 9-pin D-sub connector (male). When connecting an external GPS receiver, it must have an RS232 serial output via a wired connection. The GPS receiver should have its own RS232 serial cable that plugs into it, while the other end is terminated with a standard 9-pin D-sub connector (female).

With the male and female D-sub connectors are joined, a wired RS232 serial link is established between the external GPS receiver and the GPR unit.

Refer to Appendix C - External GPS for a description of the external GPS cable and pinouts.

Single measuring wheel

Referring to Figure 8 below. The measuring wheel, Φ 250mm is made of printed plastics and fits all three CrossOver GPR units, the odometer and cable are housed inside, protected. Downward pressure is accomplished with rubber straps, and the shape is optimised for smooth operation in all cases. Please note that there's a threaded hole in the mounting part for keeping the locking bolt when the wheel is not in use (will help our clients keep track of the bolt).



Figure 7 GPS-mounts for the CrossOver Cart and GPR Unit



Figure 8 Single measuring wheel attached with the GPR system.

1.8. Pulling kit

The pulling kit consists of the pulling rods, chest-harness, waist belt. These accessories are primarily used in rough terrain, where carts are non-practical, and of course with the C0730-antenna for which no cart is available. See Figure 9 below.



Figure 9 Practical use of the waist belt, pulling rods, handle, and pad-harness.

2 Appendix A – Specifications

ImpulseRadar products are under continuous development, and we reserve the right to change specifications at any time and without prior notice. You may verify product specifications at any time by contacting our headquarters at; support@impulseradar.se

CrossOver-4080

GPR UNIT	
Technology	ImpulseRadar real-time sampling
Antenna type	PinPointR/CrossOver dual channel
Centre frequency	CH-1: 400 MHz / CH-2: 800 MHz
Signal to noise ratio (SNR)	> 100 dB
Significant/useful number of bits	> 16 bits
Scans/second	> 800
Survey speed	> 130 km/h @ 5 cm point interval
Time window	400 ns
Bandwidth	> 120%, fractional, -10 dB
Acquisition mode	Wheel, time, or manual
Positioning	Wheel encoder, internal DGPS, external GPS (NMEA 0183 protocol) and Total Station (pseudo NMEA)
Power supply	12 V Li-Ion rechargeable battery, or external 12 V DC source
Power consumption	1.26 A
Operating time	7 hours
Dimensions	444 x 355 x 194 mm
Weight	6.35 kg (including battery)
Operating temperature	-20° to +50°C
Environmental	IP65

Regulatory certification	CE, FCC, and IC Approved
CART	
Dimensions (folded for transport)	870 x 540 x 370 mm
Dimensions (when in use)	1010 x 540 x 1030 mm
Wheels	4 x Ø315 mm
Weight	12.8 kg (Pushcart only) ¹ , 20 kg (Pushcart, GPR unit & Device) ²
USER INTERFACE	
Display	720 x 1280 pixel or better
Operating system	Android™ >ver. 6.0 (Marshmallow) or later
Memory	2.7 GB SDRAM or better
Processor	Intel Atom x5-Z8550, Quad-core 2.3 GHz Krait 400 or better
Recommendation	Samsung Galaxy Tab Active Pro, or equivalent

¹ Pushcart, skid plate and Tablet holder, ² Pushcart, skid plate, GPR unit, Tablet holder and Android Device

CrossOver-1760

GPR UNIT	
Technology	ImpulseRadar real-time sampling
GPR unit type	CrossOver dual channel
Centre frequency	CH-1: 170 MHz / CH-2: 600 MHz
Signal to noise ratio (SNR)	>100 dB
Significant/useful number of bits	>16 bit
Scans/second	>800
Survey speed	> 130 km/h @ 5 cm point interval

Time window	900 ns
Bandwidth	>120%, fractional, -10 dB
Acquisition mode	Wheel, time, or manual
Positioning	Wheel encoder, internal DGPS, external GPS (NMEA 0183 protocol)
Power supply	12 V Li-Ion rechargeable battery, or ext. 12 V DC source
Power consumption	1.2 A
Operating time	7 hours
Dimensions	695 x 445 x 205 mm
Weight	9.5 kg (including battery)
Operating temperature	-20° to +50°C
Environmental	IP65
Regulatory certification	CE, FCC, and IC Approved
CART	
Dimensions (folded for transport)	920 x 640 x 390 mm
Dimensions (when in use)	1100 x 640 x 1030
Wheels	4 x Ø315 mm
Weight	15.3 kg (Cart only) ¹ , 25.7 kg (Cart, GPR unit & Display) ²
USER INTERFACE	
Display	720 x 1280 pixel or better
Operating system	Android™ 6.0 (Marshmallow) or later
Memory	2.7 GB SDRAM or better
Processor	Intel Atom x5-Z8550, Quad-core 2.3 GHz Krait 400 or better
Recommendation	Samsung Galaxy Tab Active Pro (or equivalent)

CrossOver-730

GPR UNIT	
Technology	ImpulseRadar real-time sampling
GPR unit type	CrossOver dual channel
Centre frequency	CH-1: 70 MHz / CH-2: 300 MHz
Signal to noise ratio (SNR)	>100 dB
Significant/useful number of bits	>16 bit
Scans/second	>800
Survey speed	> 130 km/h @ 5 cm point interval
Time window	1200 ns, standard
Bandwidth	>120%, fractional, -10 dB
Acquisition mode	Wheel, time or manual
Positioning	Wheel encoder, internal DGPS, external GPS (NMEA 0183 protocol)
Power supply	12 V Li-Ion rechargeable battery, or ext. 12 V DC source
Power consumption	1.3 A
Operating time	7 hours
Dimensions	972 x 762 x 270 mm
Weight	19 kg (including battery)
Operating temperature	-20° to +50°C
Environmental	IP65
Regulatory certification	CE, FCC, and IC Approved
USER INTERFACE	
Display	720 x 1280 pixel or better
Operating system	Android™ 6.0 (Marshmallow) or later

Memory	2.7 GB SDRAM or better
Processor	Intel Atom x5-Z8550, Quad-core 2.3 GHz Krait 400 or better
Recommendation	Samsung Galaxy Tab Active Pro (or equivalent)

Note on channel activation: An antenna that is configured for single channel operation may later be upgraded to enable second channel activation. However, the centre frequency pairings are fixed according to the type of CrossOver® antenna, as per the specification above. For further clarification, please contact our headquarters at the details listed above.

3 Appendix B – Care and Maintenance

Battery Care

- Avoid leaving batteries in a discharged state for prolonged periods.
- Charge batteries at room temperature whenever possible to maximize their lifespan.
- Store batteries in a cool place, ideally at 10°C, but avoid freezing conditions. Do not expose batteries to temperatures below -30°C to prevent freezing and case damage.
- If batteries are stored for extended periods, ensure they are charged to 40–60% and recharge occasionally. Avoid leaving them uncharged for more than one month or without charging for over a year.
- PPR/CO batteries are made of high-quality material. However, in rare cases, if a battery fails to charge properly (as indicated by the ViewPoint battery status indicator) even after a full recharge, consider it damaged and replace it.

Cable Care

- Keep cable connectors clean and free from dust and moisture using a gentle air spray.
- Protect connectors with dust caps when not in use.
- Avoid using cables for purposes other than their intended function (e.g., carrying loads or suspending equipment).
- Before opening the cart hood, ensure the encoder and external GPS cables are disconnected.

Sensor and Skid Pad Maintenance

- Inspect the skid pads for wear. Replace them if they become excessively worn to prevent damage to the underlying housing.
- Avoid driving the cart through deep water puddles to prevent water ingress into the GPR unit. The device is rated IP-65; please use it accordingly.
- Regularly check and calibrate the odometer for accurate measurements.

Storage and Transport of the Product

- For longer periods, always store the PinPointR/CrossOver system in its shipping box or a dedicated protective storage box to prevent physical damage.
- Ensure all components are dry before storage to avoid moisture damage or corrosion.
- Store the system in a clean, dust-free environment. Avoid areas with high humidity or extreme temperatures.
- If practical, maintain a stable storage temperature between 10°C and 25°C. Do not store the product in temperatures below -30°C or above 50°C.
- For extended storage, disconnect and remove batteries to prevent leakage or damage. Always store batteries away from the device.
- Use protective lids and covers on all connectors to prevent dust and moisture ingress.

General Maintenance

Before use

- Ensure batteries are charged.

- Verify that batteries are firmly inserted, that wheel and GPS connectors are properly connected, and that the external GPS pole is securely fastened without stretching the GPS cable.

After use

- Thoroughly clean dirt from the device using a soft, dry cloth. For hard-to-remove dust particles, use a mildly damp cloth to clean the cart.
- Spray axles and bushings with WD-40, clean them, and apply silicon-based oil every six months. Replace the axle sealing caps when wheels are removed.

Software Updates

- Periodically check for software updates using the ViewPoint update functionality. Follow update procedures carefully and back up any important data before proceeding, as rare software bugs may result in data loss during updates.
- By adhering to these care, maintenance, and storage guidelines, you will ensure the longevity, reliability, and performance of your PinPointR/CrossOver system.

4 Appendix C - External GPS

How RTK Works

RTK involves a stationary base station and one or more mobile GPS receivers, also known as rovers. Provided that the base station has continuous line-of-sight to each rover, it transmits GPS corrections to each in real-time using radio waves. If enough satellites are visible, RTK can provide a fixed position within a fraction of an inch. If insufficient satellites are visible, RTK can provide only a float solution, with a precision of a few inches.

Fixed RTK

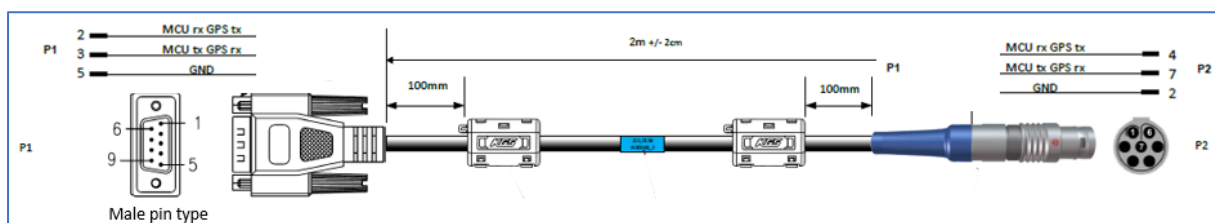
RTK uses a complicated mathematical formula or algorithm to calculate the exact number of radio wavelengths between the satellites and the base station system – a process known as ambiguity resolution – and yield either a fixed or float solution. In a fixed solution, the number of wavelengths is a whole number or integer, and the algorithm is constrained to yield a whole number. A low number of visible satellites, poor satellite constellation geometry, and a weak radio link between the base station and the rover may prevent a fixed solution.

Float RTK

In a float solution, the algorithm does not yield an acceptable fixed solution, so the ambiguity is allowed to be a decimal or floating-point number. According to Tripod Data Systems, a float solution typically generates precise coordinates to between 4 and 18 inches over a known distance between two points of just over half a mile. If a float solution is the only solution available, it may be possible to reinitialize an RTK system, or wait, for a more precise fixed solution. However, if poor satellite visibility is to blame, a fixed solution may be unavailable.

Considerations

The precision of RTK data collection depends on the distance between the base station and the rovers, so it's desirable to keep the distance between them to less than 6 miles. RTK systems are available in single and dual-frequency versions; dual-frequency versions are typically faster, more precise and operate over longer distances than single frequency versions, but they are correspondingly more expensive.



5 Appendix D – Regulatory Notices

The operation of GPR instruments is governed by various regulatory bodies and legislation depending on geographic location as follows:

- Europe ETSI EN 302 066-1&2 VI.2.1
- US FCC, Part 15.F
- Canada IC RSS-220 limits

The CrossOver systems meets the legislation requirements for each of the above regulatory bodies.

A common requirement of these regulations is that GPR equipment should only be used by professionals and those who adhere to the following rules of operation:

- UWB-transmitters should always be used near the ground or the material under investigation.
- When not in use, the data collection should be stopped, and the unit/s switched off.
- The transmitters should not be directed upwards, only towards the investigation body.

Additional notes for users in Canada and the US

The operation of this Device is restricted to law enforcement, fire and rescue officials, scientific research institutes, commercial mining companies, and construction companies. Operation by any other party is a violation of 47U.S.C.301 and the operator may be subject to legal penalties.

Operation is subject to the following conditions: (1) this Device may not cause harmful interference and (2) this Device must accept any interference received, including interference that may cause undesired operation of the Device.

The operation of this Device shall only occur when in contact with or within 1 m of the ground.

RSS 220:

Ce dispositif radar à pénétration du sol ne doit être utilisé qu'en contact avec le sol ou à au plus 1 m du sol.

Ce dispositif radar à pénétration du sol ne doit être utilisé que par des organismes d'application de la loi, des établissements de recherche scientifique, des sociétés minières commerciales, des entreprises de construction, et des organismes d'intervention d'urgence ou de lutte contre les incendies.

RSS GEN:

This Device contains license-exempt transmitter(s)/receiver(s) that comply with Innovation, Science and Economic Development Canada's license-exempt RSS(s). Operation is subject to the following two conditions:

- This Device may not cause interference.

- This Device must accept any interference, including interference that may cause undesired operation of the Device.

L'émetteur/récepteur exempt de licence contenu dans le présent appareil est conforme aux CNR d'Innovation, Sciences et Développement économique Canada applicables aux appareils radio exempts de licence. L'exploitation est autorisée aux deux conditions suivantes:

- L'appareil ne doit pas produire de brouillage;
- L'appareil doit accepter tout brouillage radioélectrique subi, même si le brouillage est susceptible d'en compromettre le fonctionnement.

GPR Use Coordination (USA)

FCC regulation requires users of GPR equipment to coordinate the use of their GPR equipment as described below:

§15.525 Coordination requirements.

(a) UWB imaging systems require coordination through the FCC before the equipment may be used. The operator shall comply with any constraints on equipment usage resulting from this coordination.

(b) The users of UWB imaging devices shall supply operational areas to the FCC Office of Engineering and Technology, which shall coordinate this information with the Federal Government through the National Telecommunications and Information Administration. The information provided by the UWB operator shall include the name, address and other pertinent contact information of the user, the desired geographical area(s) of operation, and the FCC ID number and other nomenclature of the UWB device. If the imaging device is intended to be used for mobile applications, the geographical area(s) of operation may be the state(s) or county(ies) in which the equipment will be operated. The operator of an imaging system used for fixed operation shall supply a specific geographical location or the address at which the equipment will be operated. This material shall be submitted to Frequency Coordination Branch, OET, Federal Communications Commission, 445 12th Street, SW, Washington, D.C. 20554, Attn: UWB Coordination.

(c) The manufacturers, or their authorized sales agents, must inform purchasers and users of their systems of the requirement to undertake detailed coordination of operational areas with the FCC prior to the equipment being operated.

For your convenience, the information required by the FCC is indicated on the next page, please print, and fill in the information and put the letter in the mail. FCC will respond with confirmation of coordination.

Date: _____

To:

Frequency Coordination Branch., OET
Federal Communications Commission
445 12th Street, SW
Washington, D.C. 20554
ATTN: UWB Coordination
Fax: 202-418-1944

RE: FCC GROUND PENETRATING RADAR COORDINATION NOTICE

COMPANY NAME:

PRIMARY ADDRESS:

CONTACT INFORMATION [CONTACT NAME AND PHONE NUMBER]:

AREA OF OPERATION [COUNTIES, STATES OR LARGER AREAS]:

FCC ID (tic the box)

- CrossOver 4080: 2ALZQ-CO4080
- CrossOver 1760: 2ALZQ-CO1760
- CrossOver 730: 2ALZQ-CO730

6 Appendix E – Warranty Statement

Defects and limited warranty

ImpulseRadar (the “Manufacturer”) warrants that for a period of twenty-four (24) months from delivery, the Manufacturer’s products will be free from defects in material and workmanship. The exception to this is consumable parts such as batteries, battery chargers, external interconnecting cables and skid/wear plates, which will carry a twelve (12) month warranty against defects in material and workmanship.

The Manufacturer’s obligations are limited to repairing or replacing parts or equipment (transportation and insurance pre-paid) which are returned to the Manufacturer without alteration or further damage and which, in the Manufacturer’s judgment, were defective or became defective during regular use.

Except for the foregoing limited warranty, the Manufacturer disclaims all warranties, express or implied, including any warranty of merchantability or fitness for a particular purpose. The Manufacturer assumes no liability for any direct, indirect, special, incidental or consequential damages or injuries caused by proper or improper operation of its equipment, whether or not defective. Concerning third-party products, the warranty and licensing terms for such third-party products shall apply instead of this warranty statement.

The Manufacturer offers the above warranty subject to the following conditions:

1. The Manufacturer shall be under no liability in respect of any defect arising from fair wear and tear, willful damage, negligence, abnormal working conditions, failure to follow the Manufacturer’s instructions (whether oral or in writing), misuse or alteration or repair of the Products without the Manufacturer’s approval.
2. The Manufacturer shall be under no liability under the above warranty (or any other warranty, condition or guarantee) if the total price for the Products has not been paid by the due date for payment.

An updated version of this Warranty Statement is available on our website at <http://www.impulseradargpr.com>.