

Release Notes ViewPoint 1.0

Current Release Version: ViewPoint 1.0

Previous Release Version: IPR 1.130

Minimum Android version required: Android 6.0 (Marshmallow) (SDK 23)

ViewPoint 1.0

News

Name

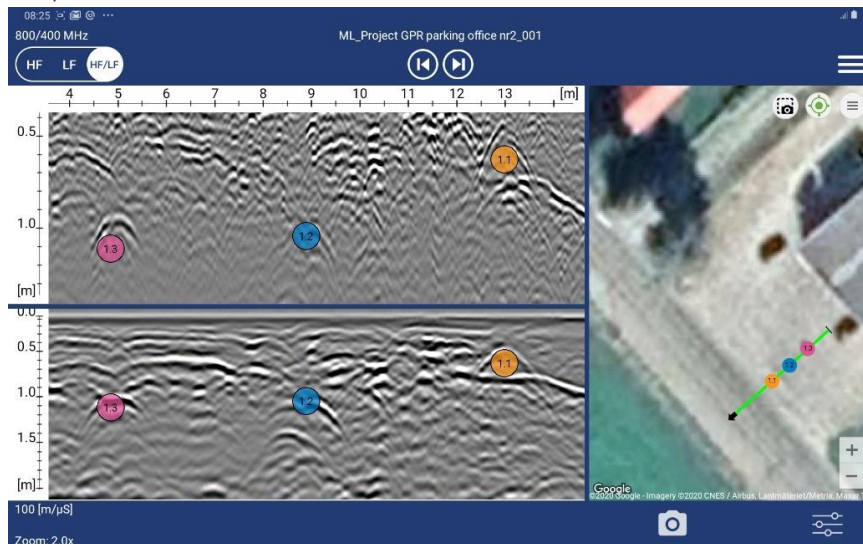
The app has changed name from IPR to ViewPoint.

App Icon

New App Icon

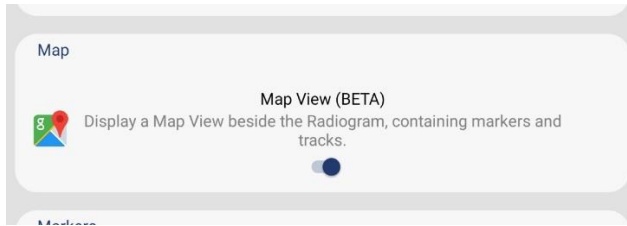


Map View



Activation

The Map View is activated from the User Preferences Menu. It is activated as default.



NOTE: The app must connect to internet so that the Google Maps API KEY can be initiated. This just need to be done one time. If this is not done, the map functionality will not work at all.

Tracks and Markers

When opening or resuming an old project, all tracks and markers for the project will be displayed on the map. The track for the current profile is green, and the other tracks is red.

NOTE: The tracks and markers are created from the *.mrk and *.cor -project files. So, the map functionality will also work with all your old projects.

Current Position

In measuring mode and when the antenna has a GPS signal, the current position will be displayed.



Center Current Position

On the map view there is a button for center current position on the map is added. When it is enabled (green symbol), the current position will be centered on the screen. When its disabled (red symbol), you are free to pan through the map as you want.



Map Screenshot

A separate button for taking a screenshot of the map is added.

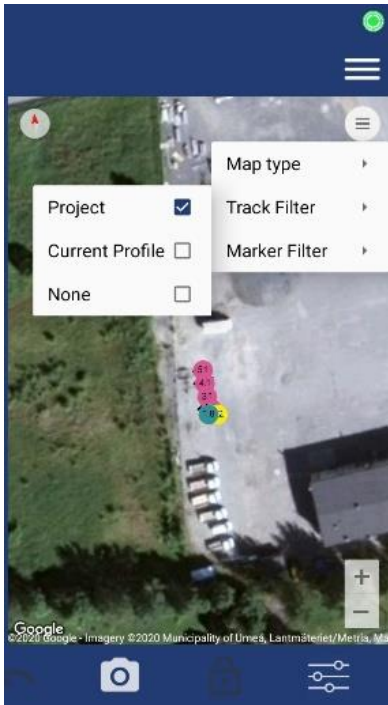


Map Filter

From the menu on the map, you can filter out if you want to see the tracks and markers for the project or current profile .

Map Type

You can select the map type that you prefer. Default is "Terrain".



Opening Profiles from Map

Click on the track that you want to open and then click on the info window to open the selected profile.



Offline Maps

If you do not have internet connection, or if no Google Map tiles are cached, no map image will load. In that case, the tracks, markers and current position will be placed out on a grid.

Cash Map Data

Instructions on how to cache map data:

Connect to Internet. Open the project Overview. Select the map type you prefer. Scroll and zoom over your target Area. Go back to the start screen. Done! The map is now cached for future use.

Markers

Marker Mirror

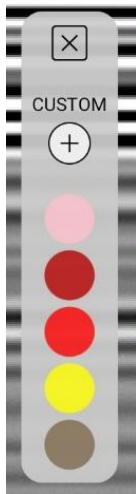
Markers you set on one channel will automatically be mirrored to the other channel.

Marker Index

The index system of the markers is changed. The first marker on profile 1 will be called 1.1, the second 1.2 and so on.

Quick Marker Menu

When activating the quick marker mode, a quick marker menu is displayed.



Marker Menu

The old marker menu that was accessed with a long press on the marker icon on the bottom toolbar is replaced by the Quick marker menu.

Marker Design

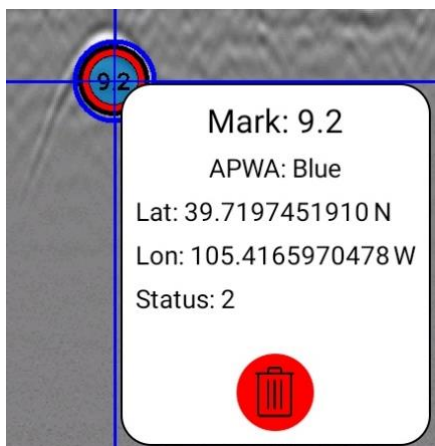
The opacity of the background color has been increased and a thin black border is added.



Clickable Markers

All markers in the radiogram is now clickable (double tap). When a marker is clicked, an info window will popup.

Note: It's not possible to click on a marker when "quick marker mode" is activated.



Delete Markers

In the info window there is a delete button. When its pushed, the selected marker will be deleted.

Marker Editor

Delete and set new markers works both in file reading mode and in measuring mode.

Auto Screenshot of Radiogram and Marker

When setting a new marker, a screenshot will automatically be saved, with only the new marker displayed in the radiogram.

Marker Standard

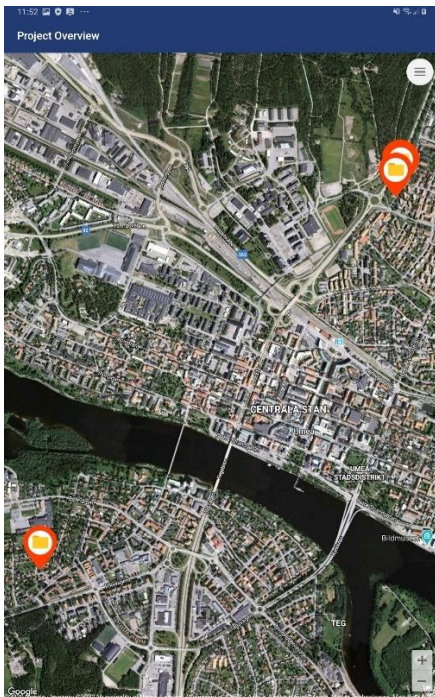
Now it is just possible to change markers standard from the User Preferences Menu. When a marker has been added to a project, the project will be locked to the marker standard that the first added marker had.

Project Overview

From the main screen of the app you can navigate to the new Project Overview.

The Project Overview displays all your projects on a map (that has GPS info). All projects are displayed as a marker on the map. If you click on a project you can choose to open the project or to resume the project.

You can also use the project overview to cache the map tiles. Just scroll and zoom over your target area, and the map will be cached for offline use.



Extended PDF Summary

The PDF report has changed name to PDF summary.

Disclaimer text.

Impulse Radar disclaimer text is added to the PDF.

User Corporate Logo

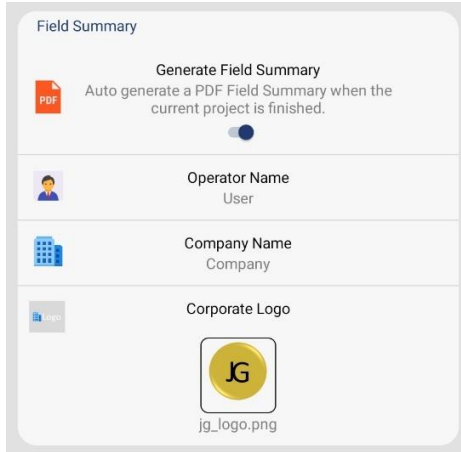
Possibility to add company logo to the pdf report from the User Preference menu. The logo can be stored anywhere on the tablet, you just need to browse to the folder and select the image you want to use.

Auto Screenshots of the map

A screen shot of the map displaying all profiles and markers, is automatically added to the PDF.

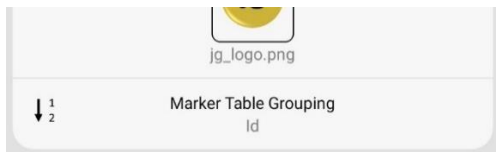
Operator screenshots of the radargram and map.

Operators screenshots of the radargram and the map will automatically be added to the PDF.



Marker Grouping in PDF

From the User Preferences menu you can select if you want the markers to be grouped by its type or by the Id in the PDF Field Summary.



Markers

ID	Type	Latitude	Longitude	Target Depth [m]
1.1	APWA- White	63.8378826667 N	20.2735918333 E	1.24
1.2	APWA- Orange	63.8379881567 N	20.2736500000 E	1.24
1.3	APWA- Orange	63.8379448333 N	20.2736135000 E	1.68
1.4	APWA- Orange	63.8378826667 N	20.2735918333 E	1.83
1.5	APWA- Orange	63.8378640000 N	20.2735726667 E	1.69
1.6	APWA- Blue	63.8380301667 N	20.2736275000 E	0.75
1.7	APWA- Blue	63.8379761667 N	20.2736258333 E	0.41
1.8	APWA- Blue	63.8379448333 N	20.2736135000 E	0.33
1.9	APWA- Blue	63.8378826667 N	20.2735918333 E	0.47
1.10	APWA- Blue	63.8378640000 N	20.2735726667 E	0.80
1.11	APWA- Blue	63.8378640000 N	20.2735726667 E	1.17
2.1	APWA- Blue	63.8374690000 N	20.2732738333 E	1.12
2.2	APWA- Blue	63.8374641567 N	20.2732821667 E	1.44
2.3	APWA- Blue	63.8374576667 N	20.2732548333 E	1.22
2.4	APWA- Blue	63.8375151667 N	20.2733211667 E	1.02

PDF Size

The size of the generated PDF is reduced with a factor of >10 compared with a PDF generated from an earlier version of the App.(A corresponding PDF with a size of 50MB generated with an earlier version of the app will have a size of 5MB in this version).

KMZ export

A KMZ-file is automatically generated and are stored in the project folder as “projectname.kmz”. The KMZ includes tracks, markers and auto screenshots of the markers in the radargram. The KMZ follows the KML standard and can be opened in Google Earth.

Top Toolbar

The top toolbar is redesigned from scratch.

New Channel Selection Control (again..)

The old channel selection button is replaced with a new control with a separate button for each mode.



Toggle between profiles

Buttons for navigating between the profiles is added.



Other News

Generate PDF/KMZ

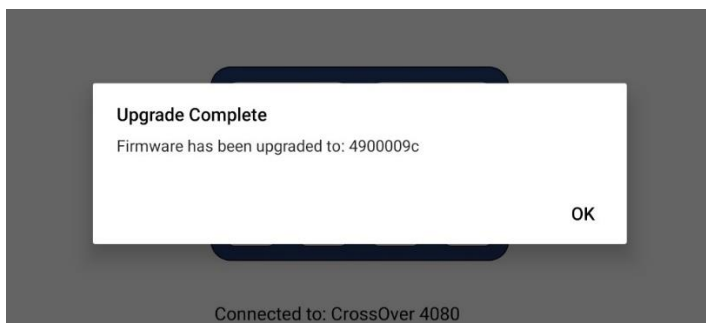
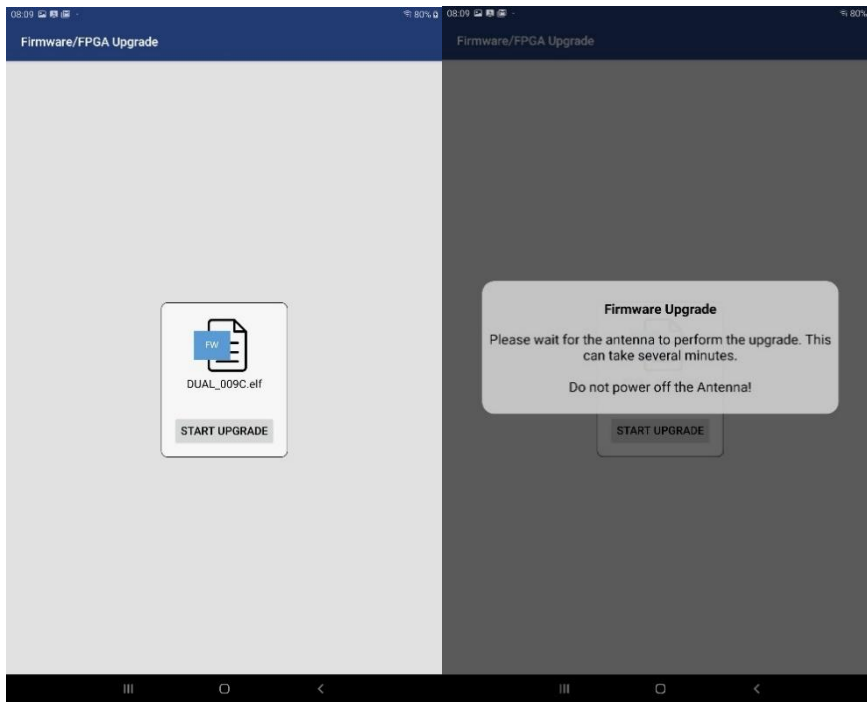
When leaving the current project, you will be prompted if you want to generate a field report and generate a KMZ. If there already exist a PDF or a KMZ for the current project, the old file will be overwritten.



Upgrade Firmware/FPGA

This function is updated, and now works as it should. The Antennas battery status will be checked, and you will be informed of the upgrade status, and you will be notified when the upgrade is done.

Design is also updated.



Fixed Bugs (from previous release)

- When changing the screen orientation, the default language was loaded. This is now fixed.
- Sometimes when the Android back navigation button was pressed, the App did close when it was supposed to go back to the previous screen.
- Sometimes data was written to the time file when it was not supposed to. From now, data will only be written to the time file when the GPS mode is set to "External + Time Pulse".
- The .cor file was not written in real time. Which could have the impact that the GPS data could be lost if the App crashed. From now the *.cor file will be written in real time.
- The vertical scale for the LF-channel had incorrect position in HF/LF mode.
- The Reference Line Marker did not adjust its position correctly when the radiogram was zoomed.
- The red backup cursor was "jumping" when you had scrolled back more than a screen width in the data, with help of the wheel, and was going forward again.
- The millisecond field in the .time file could in some rare situations be >999. When that happened the .cor file could be corrupted.

IPR 1.130

News

Language

From the User Preferences menu there is an option for select language. The app must be restarted when the language settings is changed.

Note: the PDF-field report and the help window is always in English.

Available languages are:

- English (Default)
- French (Google Translated)
- Swedish

Auto Zoom

When starting a new measurement (pushing the play button), the zoom will automatically be adjusted to fill the screen. But it will not over scan. The current zoom factor will also be kept when you stop the measurement.

Auto Zoom can be disabled/enabled from the User Preferences menu.

Select Default Marker Standard

From the User Preferences menu there is an option for select the default marker standard.

JUPEM (Malaysian marker standard)

The JUPEM standard is added to the list of marker standards.

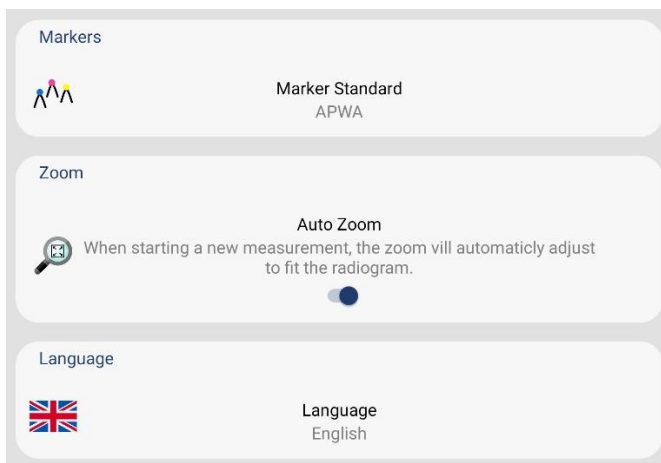


Figure 1: User Preferences Menu

Select Channel

The old select channel function, where you double tap on the screen to change channel, is replaced with a button in the top toolbar.

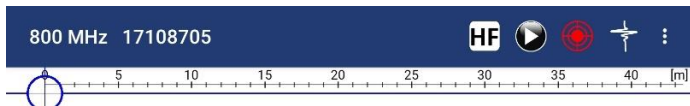


Figure 2: Top Toolbar

Manual Control Popup Window

This popup window now has buttons for controlling the cursor, scroll, set marker and zoom. This window can be opened together with other popup windows. It will not close when you click outside and it can also be opened in file reading mode.

The speed of the cursor will increase when you hold down the arrow buttons, so you can now scroll through the data horizontally and vertically much faster than before.

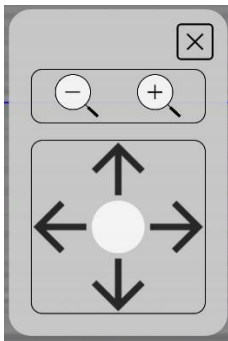


Figure 3: Manual Control Popup Window

Hyperbola and Depth to Target Popup Window

It is now possible to click outside the windows, which makes it possible to change the position of the Hyperbola or the known target with your finger. The popup window will close when the green accept button is clicked, or when the close button is clicked. The arrow buttons have been removed.

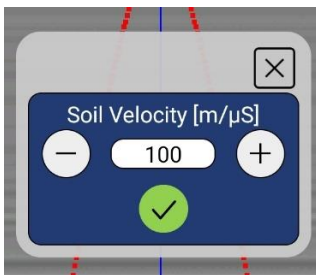


Figure 4: Hyperbola Popup Window

Popup Windows Positioning

The positioning of all popup windows is saved, so they will always pop up on the same position as when they were closed.

Screenshots in Dual Frequency Mode

It's now possible to take screenshots in the dual frequency mode. They will be saved, and they will also be displayed in the PDF-field report.

Wi-Fi Connection Warning

If the Wi-Fi connection is lost during an ongoing measurement, a warning will pop up on the screen.

If this happens, the app will try to reconnect to the Antenna until the connection is established, or until you press “Stop Measurement”. When the connection is established the measurement will continue. If you press Stop Measurement, all data will be saved but missed traces won’t be restored.

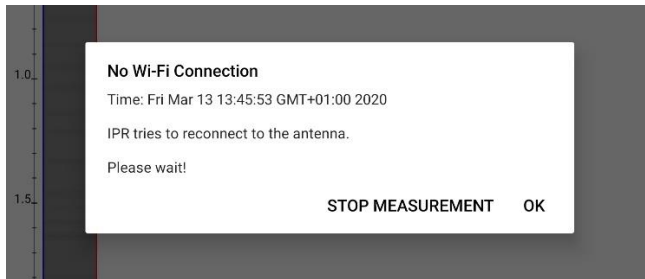


Figure 5: Lost Wi-Fi Connection dialog

Marker Index

When you continue an old project, the marker indexing will now start from last marker index in the project. In previous versions of the app, the marker index started from 1.

Fixed Bugs (from previous release)

- The gain and contrast parameter were restored when a new profile was started.
- Some small bug fixes.

IPR 1.120

News

Multi Line Project Menu

Design is updated.

Wheels

New installation/upgrade

First time after installation/upgrade when connecting the to the antenna, the app will ask you to select your default wheel.

Custom wheels

Custom wheels will not be deleted after a factory restore.

Direct Drive Cart

The new “Direct Drive Cart” is added in the default wheel list, the old cart is named “Belt Drive Cart”.

Fixed Bugs

- The built-in file browser sometimes showed doublets of profiles.
- The app could crash when adding a new wheel.

- The Field Report always showed APWA standard.
- Default and custom wheels were not saved properly in the antenna, which caused that there sometimes was doublets of the same wheels or that some wheels were missing in the list.
- When you changed the “sample” (max depth) parameter in the settings menu, the app and the antenna could “freeze” when a new measurement was started with this new parameter.

IPR 1.116

News

Single Line Project

Single Line Project is now handled more like a project. This means that single line project also will be grouped in subfolders, the same logic that already is implemented with Multi Line project.

Project Menu

When you push on the Single Line Project/Multi line Project icon you will get three options, to start a new project, resume the latest project or resume an old project.

Antenna Settings Menu

The settings menu is replaced with the new “Antenna Settings” menu. It has an updated design and are more user friendly than the old menu.

Note! There is a switch called “Show Advanced Settings”. When its deactivated, just the most necessary settings are displayed.

Zip Project Folder

It is now possible to zip a project from the apps file explorer. Do a long press on the project folder that you want to zip, and select “Zip Project”.

GPS Symbol Status

The GPS symbol will always be displayed. If there is no GPS signal, the GPS symbol is red.

PDF Field Report

The report function is adjusted to the new project structure. This means that one (1) Field report is created for each project. Example: if you running a project called “SL-X” and you have collected 10 profiles, then only one field report will be created for the whole project when it’s finished. In the case you are resuming an old project, an “extra report” will be created when you finish the project.

Project Folder Info

From the file explore in the app you can now see the size and type of the project.

Filter Window

The filter window can now also be displayed and used when showing both channels at the same time. And you can also have it opened, and on the same time use other UI.

First Installation

After a new installation/upgrade of the app, its necessary to make a factory reset after you have connected the antenna. This is now done automatically.

Fixed Bugs

- Problems regarding zoom tilt and scrolling are fixed.
- .cor file was not created if the GPS didn't have signal when pushing play button.
- The sec time field showed "-1" instead of 0 in the .time file, when flipping over from 59.
- Not possible anymore to set a marker outside the radiogram.
- PinPointR antennas will now be identified correctly.
- The app couldn't open projects that only contained LF profiles.
- The thumbs of the gain/contrast seekbar in the filter menu looked very strange in Multi Line Dual View mode.
- When opening a profile with markers in CrossPoint, "user comment" was printed out for all markers.

IPR 1.104

News

Improved Performance

Improved performance on all devices.

Fixed Bugs

-

IPR 1.103

News

Vertical Zoom

The app has a new zoom functionality. The new function will zoom in both horizontal and vertically direction. The maximum zoom is limited to 5x.

The markers retain the size when zooming.

The current zoom factor is displayed in the left bottom corner.

Vertical and Horizontal Scrolling

Both the horizontal and vertical scroll is now controlled with just one finger, instead of three! And the horizontal scroll is much smoother than before.

You scroll just like when you are scrolling on a webpage or a zoomed picture on your smartphone. Just like in earlier versions of the App, the horizontal scroll is blocked during data collection.

Preference Screen

Some of the settings in the old Settings screen is moved to the new Preference screen, and some new preferences regarding the PDF field report is added.

The Preference Screen is always available, also when the antenna is disconnected.

Improved PDF Report

Multiline

The report is now adapted to also be useful for Multiline projects. When a Multiline project is finished, A report will be generated including all markers and screenshots from the entire project. When starting a new line, the indexing of the markers will continue from its last position.

Just one report will be made for each project, not one for every new line as before.

Marker grouping

Markers are now grouped by color in the report. One table for each color and channel.

This will reduce the number of pages in the report.

Automatic screenshots of markers

Screenshots of all markers will automatically be printed out in the report (exactly as many screenshots as needed to show all markers are printed). Operators screenshot will also be printed as before.

Open Field Report

The field report can now be opened directly from the file window in the app. The pdf will be opened in an external pdf reader.

Fixed Bugs

- The Imperial measurement system now works as expected in all places in the app. You can switch between Metric and Imperial from the new Preference Screen.