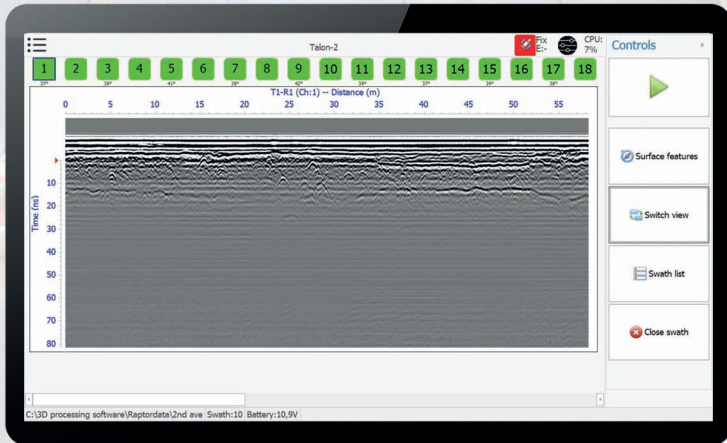




Talon-2

3D GPR Data Acquisition Software

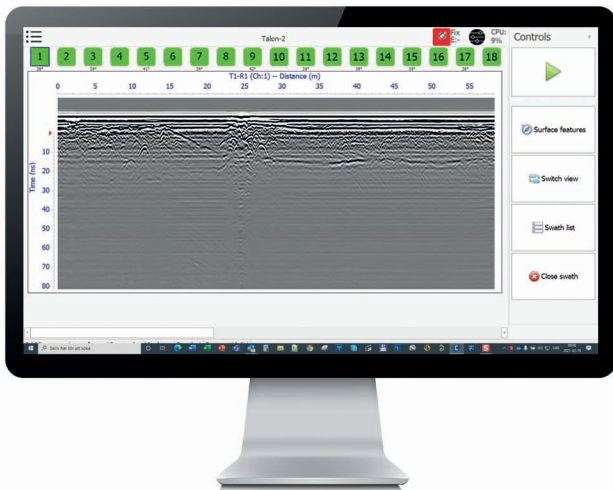


**Optimized Functionality
for Maximum Productivity**

Explore our website to find more information: www.impulseradargpr.com

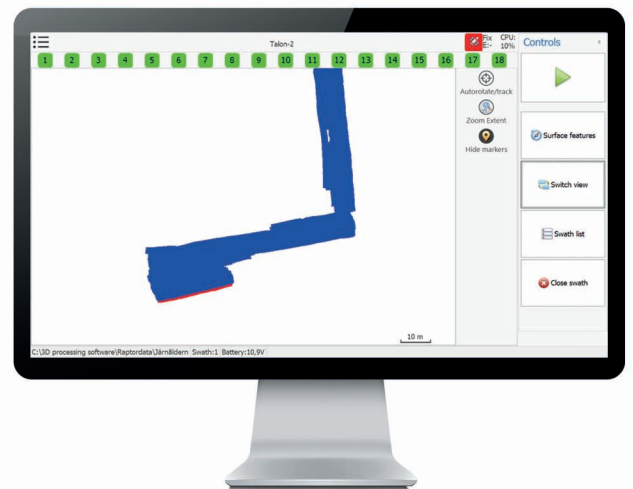


ImpulseRadar Talon-2 is proprietary Windows-based software used to configure and control ImpulseRadar Raptor antennas, and connected GPS units, for advanced 3D data acquisition. It's pure data acquisition software with a user interface designed for touch-enabled devices. The functionality is geared toward the quality control and quality assessment of both the GPR and the positioning data during acquisition.



- ⊕ Modern user-friendly user interface
- ⊕ Surface features can be placed on a map
- ⊕ Stable control for the state of the internal GPS
- ⊕ Tools for examine incoming position data to help the user to troubleshoot connection issues from connected GPS appliances or Total station appliances

- ⊕ Visuals of which receiver, or sync cable is not working. Helps in troubleshoot connection issues in array.
- ⊕ Temperature and battery level for the array are displayed
- ⊕ Verification of created channel and wheel configurations are reasonably configured to minimize any errors in a configuration prior to a measure



System requirements

Operating System	Windows™ 10 (64-bit)
Processor (CPU)	Intel® Core™ i7 Processor or equivalent
Memory	≥ 16 GB RAM
Storage	≥ 500 GB internal storage – SSD preferred

As with all ImpulseRadar systems, we look forward to your valuable feedback on the use and functionality of Talon-2 to feed our customer-driven development process.

ImpulseRadar products are under continuous development and we reserve the right to change specifications at any time and without prior notice. You may verify product specifications at any time by contacting our headquarters via our website.

