



Discover the best multi-purpose hand-held GPR system

Excellent performance for shallow investigations

- Archaeology
- Ice/snow investigations
- Infrastructure investigations
- Law enforcement and military
- Road/ Bridge inspections
- And more...

Features and advantages

- **ImpulseRadar Real-Time Sampling (RTS) based antenna technology**

Quick, clear and dependable locates to maximise in-field productivity and decision making

- **Single-channel operation 600 MHz**

Optimised for shallow investigations and a good balance for depth penetration and resolution

- **Wireless data acquisition**

No cables to be lost or broken which simplifies set-up and in-field productivity, and minimises operational servicing costs

- **Android-driven user interface**

Flexibility in choice of the acquisition device

- **8-hour battery life**

Low power consumption to extend working time with internal battery for more harsh working environments

- **Internal GPS*** Optional extra

Geo-referenced data as standard

- **Supports external GPS*** Optional extra

Compatible with DGPS or RTK-GPS for higher accuracy geo-referencing for mapping/ reporting purposes

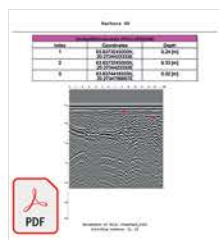


**Depth range -
down to 3 m***

*Figures for guidance only. GPR works best in high-resistive soils, absent of conductive layers. The actual depth range is dependent upon the di-electric properties of the ground or penetrable material under investigation.

ViewPoint Android App

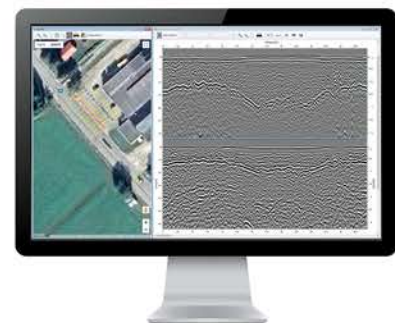
ViewPoint data acquisition App includes industry standard marker functionality to enable users to mark-up data in the field to correlate with the actual paint marks they put on the ground and any subsequent field sketches or report outputs.



CrossPoint Visualisation Software

CrossOver data files are compatible with CrossPoint software for Windows-based processing, interpretation, and analysis of GPR data.

The user-friendly interface provides practical tools for filter assignment, data processing, marking points of interest within radar profiles, visualizing markers on support maps, and exporting markers for geo-referencing within suitable CAD/GIS platforms.



Technical specification

Weight	0,4 kg / 8,8 lbs
Frequency	600 MHz
Dimensions	280 x 255 x 200 mm / 11 x 10 x 8 Inch
Warranty	2 years
Regulatory	CE, FCC & IC approved

ImpulseRadar products are under continuous development and we reserve the right to change specifications at any time and without prior notice. You may verify product specifications at any time by contacting our headquarters via our website.

