

Effective visualization
for improved productivity.

What are the benefits of using CrossPoint?

Discover simple yet effective tools to help you quickly pick targets with confidence

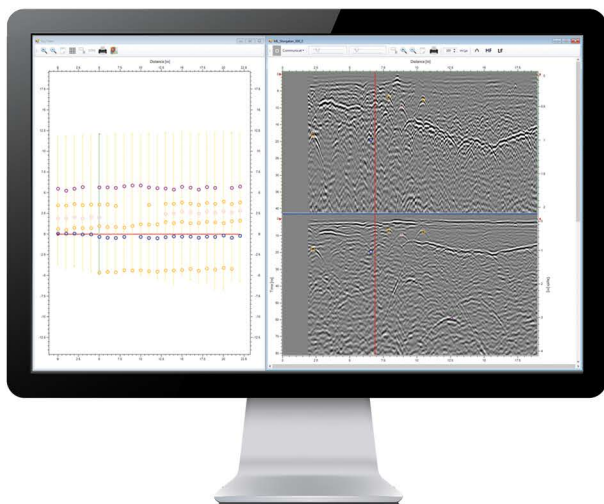
Efficient sub-surface imaging

- You can view multiple GPR profiles simultaneously to observe and easily mark recurring targets and anomalies across the adjacent profiles
- It helps you to pick weak or partial reflectors to minimize the risk of missed targets
- As you place markers in the GPR data, they automatically populate the adjacent site map to visualize position and alignment quickly
- Easily export markers, GPR profiles, or both for georeferencing within suitable CAD/ GIS environments

Accomplish more and grow your business

Efficient sub-surface imaging

You can acquire data with any CrossOver antenna or PinPointR using the multiline project mode in ViewPoint. This method allows data to be collected quickly and efficiently, especially if using GPS. CrossPoint is ideally suited for projects that involve the placement and management of multiple markers to indicate the alignment and depth of buried targets.



A user-experience that meets your needs

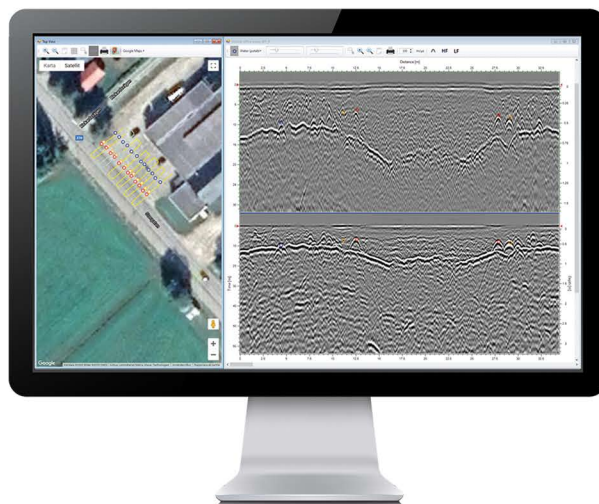
Simple and intuitive

You don't need to be a scientist or a specialist to run the software as it's streamlined for the purpose and not overly complicated..

Save time on interpretation with clear and practical tools

Effective workflows

The data manager enables practical and intuitive information organization, including profiles, filters, markers, and data properties. The user has complete control of these views via tabs that can be enabled/ disabled as needed. Simultaneously, you can view GPR data for one or more profiles, including dual-channel support, as well as the site map



Increased productivity >25%

Dedicated to processing CrossOver and PinPointR data

CrossPoint is explicitly designed to import, process, visualize and manage CrossOver and PinPointR data files. This approach means you spend less time on adjustments and settings and more time getting work done.

System requirements

Operating System	Windows™ 7 or later
Processor (CPU)	11 GHz or faster, 32-bit (x86) or 64-bit (x64)
Memory	1 GB RAM (32-bit), or 2 GB RAM (64-bit)
Storage	16 GB available hard disk space (32-bit), or 20 GB (64-bit)

CrossPoint is licensed and requires a license key for full operation. You can run it in a free 'demo-only' test mode without a license. Contact us today to learn more.

ImpulseRadar products are under continuous development and we reserve the right to change specifications at any time and without prior notice. You may verify product specifications at any time by contacting our headquarters via our website.



www.impulseradar.com



ImpulseRadar AB
Skolgatan 22,
SE-939 31, Malå, Sweden